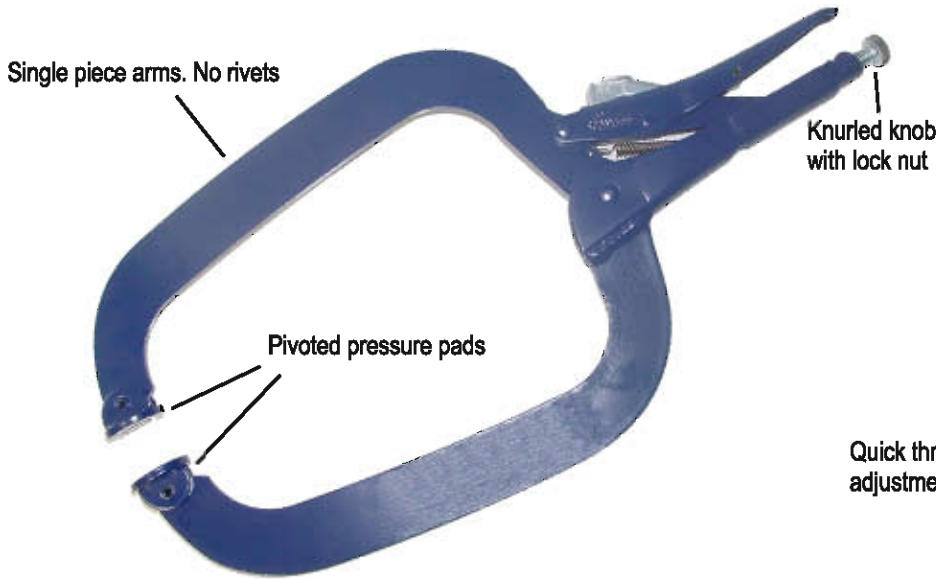


SCANGRIP pliers manufactured since 1946

Single piece arms. No rivets



Hardened teeth jaws



Constructed of high-grade heat-treated alloy steel for maximum toughness and durability

SCANGRIP HAND CLAMPS



• General purpose for quick positioning. Curved jaws and hardened teeth allow for excellent grip on round objects, ideal for small thin objects.

PART NO.	No.4
Length:	220mm
Weight:	0.50kg
Max. Span:	0 - 30mm
Min. Span:	0mm flat, eller dia 8mm
Max. Reach:	40mm
Max. Clamp Pressure:	400N
Jaw Width:	16mm



• Forward pointing jaws allow for clamping close to flat surfaces and narrow corners.

PART NO.	No.6
Length:	260mm
Weight:	0.64kg
Max. Span:	80mm
Min. Span:	0mm flat
Max. Reach:	80mm
Jaw Points:	Approx. R = 2mm x Width 10mm
Max. Clamp Pressure:	2500N



• Multi purpose welding clamp with self adjusting pressure pads.

PART NO.	No.7
Length:	280mm
Weight:	0.72kg
Max. Span:	80mm
Min. Span:	0mm
Max. Reach:	80mm
Max. Clamp Pressure:	2500N

SCANGRIP HAND CLAMPS



• Double jawed welding clamp ideal for holding two pieces together, pads distribute pressure evenly providing a better grip on both objects.

PART NO.	No.9
Length:	260mm
Weight:	0.78kg
Max. Span:	60mm
Min. Span:	0mm flat
Max. Reach:	70mm
Int. distance between jaws:	38mm
Max. Clamp Pressure:	1000N



• Space saving clamp with self adjusting pressure pads able to fit into tight corners.

PART NO.	No.14
Length:	280mm
Weight:	0.64kg
Max. Span:	80mm
Min. Span:	0mm
Max. Reach:	85mm
Max. Clamp Pressure:	2500N



• Extra strong wide jaws allow pressure to be applied to the corners first then along the front edge, perfect for bending sheet metal.

PART NO.	No.15
Length:	220mm
Weight:	0.61kg
Max. Span:	15mm dia
Min. Span:	0mm
Max. Reach:	30mm
Jaw Width:	67mm
Max. Clamp Pressure:	3000N



• "Nudge" new spare parts into position and hold them steady for welding. Clamp includes two hardened pointed teeth, positioned offset from each other, one on each jaw.

PART NO. No.18

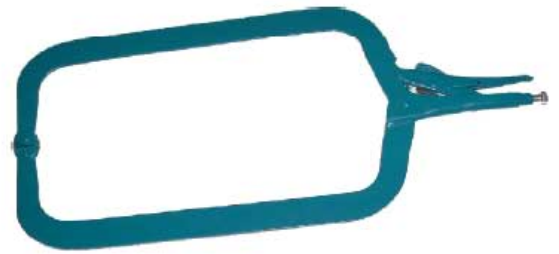
Length: 220mm
Weight: 0.52kg
Max. Clamp Pressure: 2500N



• Features wide arms that reach over and around wide obstacles and grip to the workplace securely. Use when protection of delicate surfaces is needed.

PART NO. No.72

Length: 410mm
Weight: 1.22kg
Max. Span: 170mm
Min. Span: 0mm
Max. Reach: 210mm
Max. Clamp Pressure: 1000N



• Same features as clamp No.75, with longer reach and greater length.

PART NO. No.75

Length: 600mm
Weight: 1.82kg
Max. Span: 250mm
Min. Span: 0mm
Max. Reach: 400mm
Max. Clamp Pressure: 400N



• Small and handy pocket sized • With wire cutter
• Ideal for gripping and turning rusty and damaged nuts and bolt heads in tight spaces
• Perfect choice for precision work and delicate operations in awkward areas

PART NO. No.4S

Length: 100mm
Weight: 0.08kg
Max. Span: 28mm
Max. Reach: 13mm

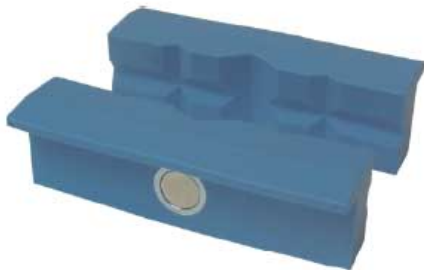
PART NO. No.5S

Length: 125mm
Weight: 0.17kg
Max. Span: 35mm
Max. Reach: 19mm

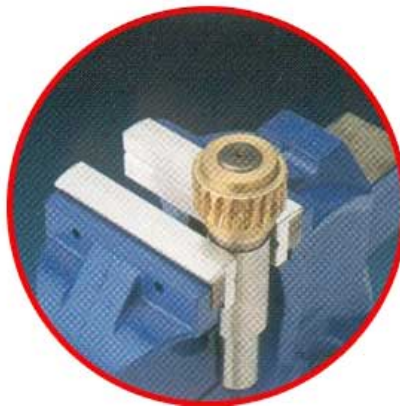
PART NO. No.6L

Length: 150mm
Weight: 0.185kg
Max. Span: 65mm
Max. Reach: 46mm

For clamping and safe handling of all kinds of work-pieces in bench or machine vices



MAGNEFIX PUP
Polyurethane jaws with grooves
100mm



Magnetized attachment to vice jaws



MAGNEFIX PUF
Polyurethane jaws with cross serrations
100mm